

Suite 8

Ouverture

*Johann Kaspar
Ferdinand Fischer*

6

12

17

21

25

29

33

37

41

45

52

59

Entrée

Musical score for 'Entrée' in 2/2 time. The score consists of six staves of music. The first staff starts with a treble clef and a 2/2 time signature. The second staff begins at measure 6. The third staff begins at measure 11 and includes first and second endings. The fourth staff begins at measure 15. The fifth staff begins at measure 20. The sixth staff begins at measure 24 and ends with a double bar line and repeat dots.

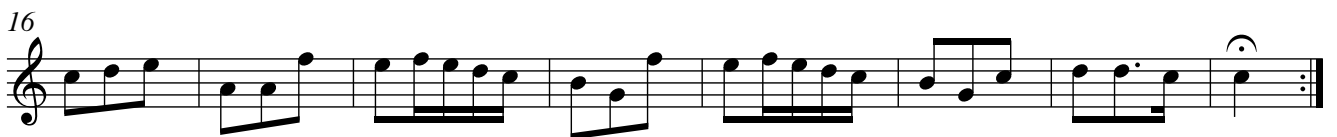
Canaries

Musical score for 'Canaries' in 6/8 time. The score consists of three staves of music. The first staff begins with a treble clef and a 6/8 time signature. The second staff begins at measure 4 and includes a first ending. The third staff begins at measure 9 and ends with a double bar line and repeat dots.

Gavotte en Rondeau



Passepied



Echo

Musical score for 'Echo' in C major, 2/4 time. The piece consists of seven staves of music. The first staff starts at measure 9 and ends with a repeat sign. The second staff starts at measure 18 and ends with a repeat sign. The third staff starts at measure 26 and ends with a repeat sign. The fourth staff starts at measure 35 and ends with a repeat sign. The fifth staff starts at measure 43 and ends with a repeat sign. The sixth staff starts at measure 43 and ends with a repeat sign. The seventh staff starts at measure 43 and ends with a repeat sign. The dynamics are marked as *f* (forte) and *p* (piano) throughout the piece.

Menuet

Musical score for 'Menuet' in C major, 3/4 time. The piece consists of two staves of music. The first staff starts at measure 11 and ends with a repeat sign. The second staff starts at measure 11 and ends with a repeat sign.

Trio

Musical score for 'Trio' in C major, 3/4 time. The piece consists of two staves of music. The first staff starts at measure 11 and ends with a repeat sign. The second staff starts at measure 11 and ends with a repeat sign.

Menuet da capo

Suite 8

Ouverture

Johann Kaspar
Ferdinand Fischer

6

12

17

21

25

29

33

37

41

45

52

59

Entrée



Canaries



Gavotte en Rondeau



Passepied



Echo

Musical score for Echo, featuring six staves of music. The score is written in treble clef with a common time signature (C). The dynamics are marked as *f* (forte) and *p* (piano). The measure numbers are 9, 18, 26, 35, and 43. The piece concludes with a fermata on the final note of the sixth staff.

Menuet

Musical score for Menuet, featuring two staves of music. The piece is in 3/4 time. The first staff begins with a repeat sign. The second staff concludes with a fermata on the final note.

Trio

Musical score for Trio, featuring two staves of music. The piece is in 3/4 time. The first staff begins with a repeat sign. The second staff concludes with a fermata on the final note.

Menuet da capo

Suite 8

Ouverture

Johann Kaspar
Ferdinand Fischer

6

12

17

21

25

29

33

37

41

45

52

59

Entrée



Canaries



Gavotte en Rondeau



Passepied



Echo

9 *f p f p f p*

18 *f p f p*

26 *f p*

35 *f p f p f*

43 *p f p f p*

51 *f p*

Menuet

11

Trio

11

Menuet da capo

Suite 8

Ouverture

*Johann Kaspar
Ferdinand Fischer*

6

12

17

21

25

29

33

37

41

45

52

59

Entrée



Canaries



Gavotte en Rondeau



8



16



24



32



41



Passepied



8



16



Echo

Musical score for the 'Echo' movement, featuring six staves of music. The score includes dynamic markings (*f* and *p*) and measure numbers (9, 18, 26, 35, 43). The music is written in a single system with a common time signature (C) and a key signature of one sharp (F#).

Menuet

Musical score for the 'Menuet' movement, featuring two staves of music. The score includes a 3/4 time signature and a key signature of one sharp (F#).

Trio tacet
Menuet da capo

Suite 8

Ouverture

*Johann Kaspar
Ferdinand Fischer*

6

12

17

21

25

29

33

37

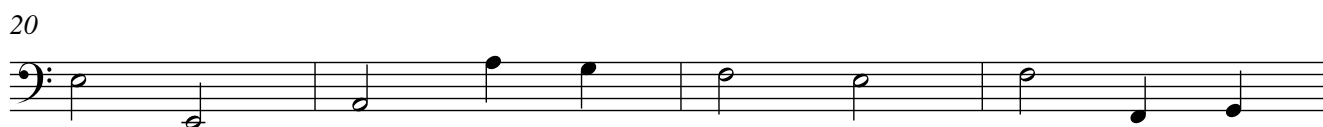
41

45

52

59

Entrée



Canaries



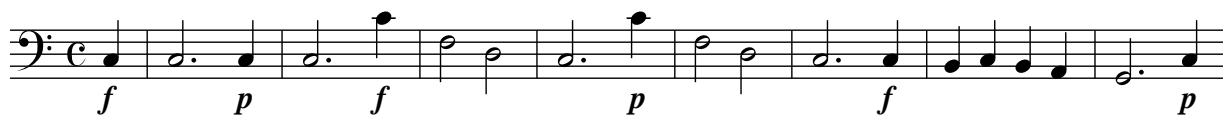
Gavotte en Rondeau



Passepied



Echo



9



18



26



35



43



Menuet



11



Trio tacet
Menuet da capo