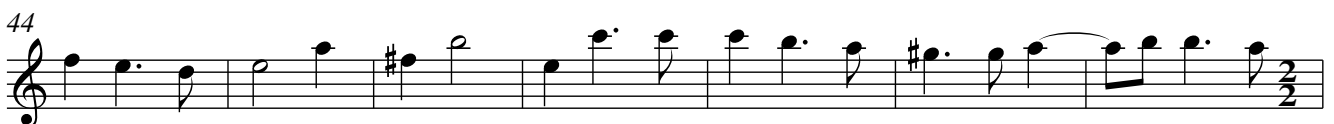
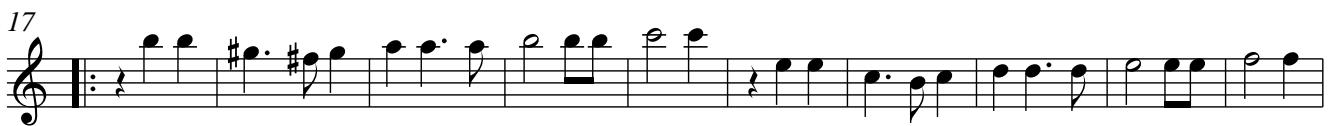


Suite 2

Ouverture

*Johann Kaspar
Ferdinand Fischer*



Plainte

Lentement

Musical score for 'Plainte' in 3/2 time, marked 'Lentement'. The score consists of five staves of music. The first staff begins with a treble clef and a 3/2 time signature. The music is written in a single melodic line with various note values including quarter, eighth, and sixteenth notes, as well as rests and ties. Measure numbers 9, 18, 26, 34, and 43 are indicated at the start of their respective staves. The piece concludes with a double bar line and a fermata over the final note.

Gigue

Vite

Musical score for 'Gigue' in 6/4 time, marked 'Vite'. The score consists of five staves of music. The first staff begins with a treble clef and a 6/4 time signature. The music is written in a single melodic line with various note values including quarter, eighth, and sixteenth notes, as well as rests and ties. Measure numbers 5, 10, 13, 18, and 22 are indicated at the start of their respective staves. The piece features first, second, and third endings, marked with '1', '2', and '3' respectively. The score concludes with a double bar line and a fermata over the final note.

Bourrée



Musical score for Bourrée, consisting of three staves of music in treble clef and common time. The first staff begins with a treble clef and a common time signature. The second staff starts with a measure number '6' and contains a repeat sign. The third staff starts with a measure number '11' and ends with a double bar line and repeat sign.

Trio



Musical score for Trio, consisting of three staves of music in treble clef and common time. The first staff begins with a treble clef and a common time signature. The second staff starts with a measure number '7' and contains a repeat sign. The third staff starts with a measure number '13' and ends with a double bar line and repeat sign.

Bourrée da capo

Menuet



Musical score for Menuet, consisting of three staves of music in treble clef and 3/4 time. The first staff begins with a treble clef and a 3/4 time signature. The second staff starts with a measure number '9' and contains a repeat sign. The third staff starts with a measure number '17' and contains first and second endings, marked with '1' and '2' above the notes.

Suite 2

Ouverture

*Johann Kaspar
Ferdinand Fischer*



Plainte

Lentement

Musical score for 'Plainte' in 3/2 time, marked 'Lentement'. The score consists of six staves of music. The key signature has one sharp (F#). The piece begins with a treble clef and a 3/2 time signature. The melody is characterized by long, sustained notes and a slow, mournful pace. The score includes measure numbers 9, 18, 26, 34, and 43. The piece concludes with a final cadence.

Gique

Vite

Musical score for 'Gique' in 6/4 time, marked 'Vite'. The score consists of six staves of music. The key signature has one sharp (F#). The piece begins with a treble clef and a 6/4 time signature. The melody is characterized by a fast, rhythmic pattern with many eighth and sixteenth notes. The score includes measure numbers 5, 9, 13, 18, and 22. The piece concludes with a final cadence and a repeat sign.

Bourrée



Musical score for Bourrée, consisting of three staves of music in treble clef and common time. The first staff begins with a treble clef and a common time signature. The second staff starts at measure 6. The third staff starts at measure 11. The piece concludes with a double bar line and repeat dots.

Trio



Musical score for Trio, consisting of three staves of music in treble clef and common time. The first staff begins with a treble clef and a common time signature. The second staff starts at measure 7. The third staff starts at measure 13. The piece concludes with a double bar line and repeat dots.

Bourrée da capo

Menuet



Musical score for Menuet, consisting of three staves of music in treble clef and 3/4 time. The first staff begins with a treble clef and a 3/4 time signature. The second staff starts at measure 9. The third staff starts at measure 17. The piece concludes with a double bar line and repeat dots. First and second endings are indicated by boxes labeled '1' and '2' above the notes.

Suite 2

Ouverture

*Johann Kaspar
Ferdinand Fischer*



Plainte

Lentement

9

18

26

34

43

Gique

Vite

5

9

13

18

22

Bourrée

Musical score for Bourrée, measures 1-11. The piece is in C major, 3/4 time, and consists of 11 measures. The notation is in bass clef with a treble clef for the right hand. The first measure starts with a treble clef and a common time signature. The piece ends with a double bar line and repeat dots.

Trio

Musical score for Trio, measures 13-17. The piece is in C major, 3/4 time, and consists of 5 measures. The notation is in bass clef with a treble clef for the right hand. The piece ends with a double bar line and repeat dots.

Bourrée da capo

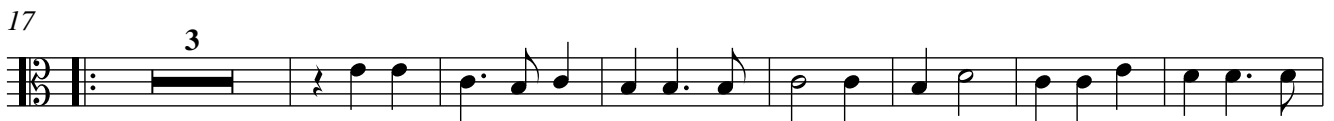
Menuet

Musical score for Menuet, measures 17-21. The piece is in C major, 3/4 time, and consists of 5 measures. The notation is in bass clef with a treble clef for the right hand. The piece ends with a double bar line and repeat dots. There are first and second endings marked with '1' and '2' above the notes.

Suite 2

Ouverture

*Johann Kaspar
Ferdinand Fischer*



Plainte

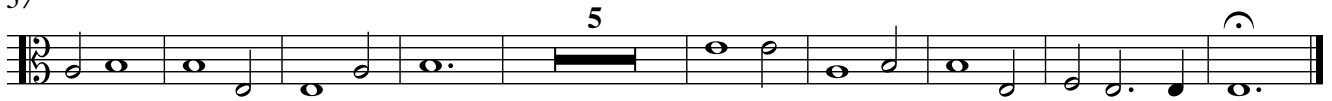
Lentement
10



18



37



Gigue

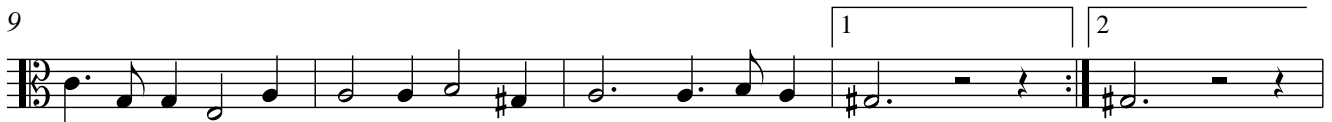
Vite



5



9



13



18



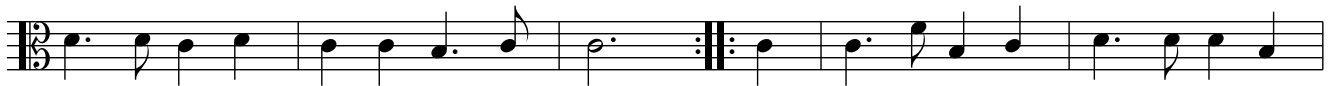
22



Bourrée



6



11



Trio tacet
Bourrée da capo

Menuet



9



17



Suite 2

Ouverture

*Johann Kaspar
Ferdinand Fischer*



Plainte

Lentement

10



17



31



Gique

Vite



5



9



13



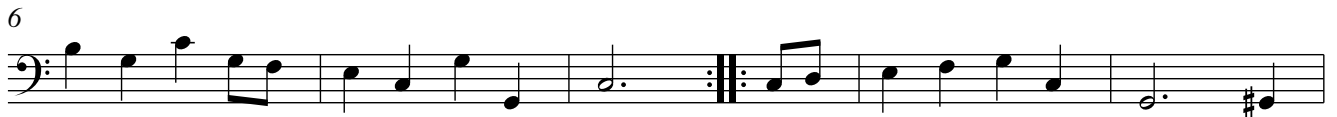
18



22



Bourrée



Trio tacet
Bourrée da capo

Menuet

