

Suite 6

Ouverture

*Johann Kaspar
Ferdinand Fischer*

Musical score for Suite 6 Overture, measures 1-60. The score is written in treble clef, key of F major (one flat), and 2/2 time signature. The music consists of a single melodic line with various rhythmic patterns, including eighth and sixteenth notes, and rests. There are two first and second endings marked with '1' and '2' above the staff. The first ending occurs at measure 13 and the second at measure 60. The score ends with a double bar line and repeat signs.

Brandle

Musical score for 'Brandle' in G major, 2/4 time. The score consists of six staves of music. The first staff begins with a treble clef, a key signature of one flat (B-flat), and a 2/4 time signature. The music features a mix of eighth and sixteenth notes, with some triplet markings. The second staff is marked with a '6' above the first measure. The third staff is marked with a '13' above the first measure. The fourth staff is marked with a '19' above the first measure and includes first and second endings, with the second ending labeled 'Gay' and a 3/4 time signature. The fifth staff is marked with a '25' above the first measure. The sixth staff is marked with a '33' above the first measure and includes first and second endings, with the second ending marked with a fermata.

Amener

Musical score for 'Amener' in G major, 3/4 time. The score consists of three staves of music. The first staff begins with a treble clef, a key signature of one flat (B-flat), and a 3/4 time signature. The music features a mix of eighth and sixteenth notes. The second staff is marked with an '8' above the first measure. The third staff is marked with a '16' above the first measure.

Gavotte

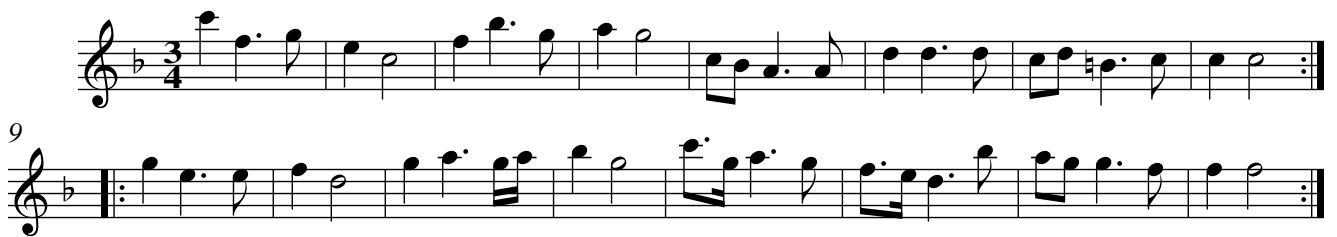
Musical score for 'Gavotte' in G major, 2/4 time. The score consists of two staves of music. The first staff begins with a treble clef, a key signature of one flat (B-flat), and a 2/4 time signature. The music features a mix of eighth and sixteenth notes. The second staff is marked with a '6' above the first measure.

Courante



Musical score for Courante, consisting of three staves of music in 3/2 time. The first staff begins with a treble clef, a key signature of one flat (B-flat), and a 3/2 time signature. The music features a mix of eighth and sixteenth notes. The second staff starts at measure 5 and includes a repeat sign. The third staff starts at measure 9 and ends with a repeat sign.

Sarabande



Musical score for Sarabande, consisting of two staves of music in 3/4 time. The first staff begins with a treble clef, a key signature of one flat (B-flat), and a 3/4 time signature. The music is characterized by a slow, steady eighth-note rhythm. The second staff starts at measure 9 and ends with a repeat sign.

Bourrée



Musical score for Bourrée, consisting of three staves of music in 3/4 time. The first staff begins with a treble clef, a key signature of one flat (B-flat), and a 3/4 time signature. The music features a lively eighth-note pattern. The second staff starts at measure 5 and includes a repeat sign. The third staff starts at measure 11 and ends with a repeat sign.

Menuet

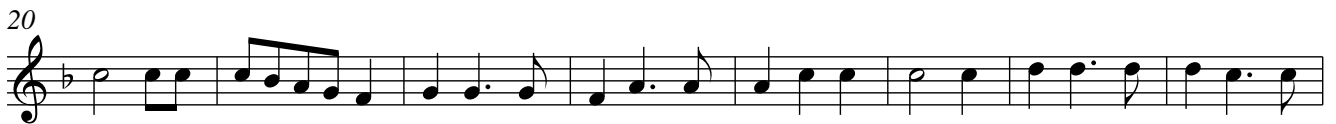
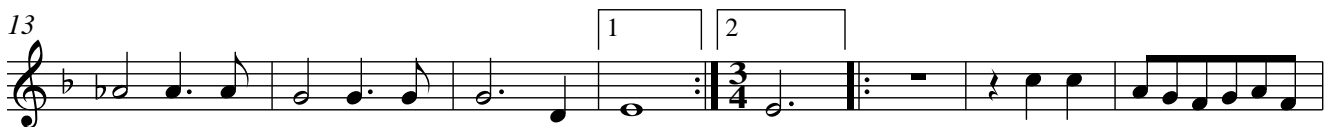


Musical score for Menuet, consisting of two staves of music in 3/4 time. The first staff begins with a treble clef, a key signature of one flat (B-flat), and a 3/4 time signature. The music features a mix of eighth and sixteenth notes. The second staff starts at measure 9 and includes first and second endings, indicated by boxes labeled '1' and '2' above the notes.

Suite 6

Ouverture

*Johann Kaspar
Ferdinand Fischer*



Brandle

6

13

19

25

33

1 2 Gay

Amener

8

16

Gavotte

6

Courante

Musical score for Courante, measures 1-9. The piece is in 3/2 time and B-flat major. The first line (measures 1-4) features a melodic line with eighth and quarter notes. The second line (measures 5-8) includes a repeat sign and a fermata. The third line (measures 9) concludes with a repeat sign.

Sarabande

Musical score for Sarabande, measures 1-9. The piece is in 3/4 time and B-flat major. The first line (measures 1-8) shows a steady melodic progression. The second line (measures 9) begins with a repeat sign and continues the melodic line.

Bourrée

Musical score for Bourrée, measures 1-11. The piece is in 3/4 time and B-flat major. The first line (measures 1-4) has a rhythmic pattern of eighth and quarter notes. The second line (measures 5-10) includes a repeat sign and a fermata. The third line (measures 11) concludes with a repeat sign.

Menuet

Musical score for Menuet, measures 1-9. The piece is in 3/4 time and B-flat major. The first line (measures 1-8) features a simple melodic line with first and second endings. The second line (measures 9) continues with first and second endings.

Suite 6

Ouverture

*Johann Kaspar
Ferdinand Fischer*



Brandle

Musical score for 'Brandle' in G major, 2/4 time. The score consists of five staves of music. The first staff starts with a treble clef and a key signature of one flat (F major). The second staff is marked with a '6' above it. The third staff is marked with a '13' above it. The fourth staff is marked with a '19' above it and includes first and second endings, with the second ending labeled 'Gay' and a 3/4 time signature. The fifth staff is marked with a '25' above it. The sixth staff is marked with a '33' above it and includes first and second endings, with the second ending featuring a fermata.

Amener

Musical score for 'Amener' in G major, 3/4 time. The score consists of three staves of music. The first staff starts with a bass clef and a key signature of one flat (F major). The second staff is marked with an '8' above it. The third staff is marked with a '16' above it.

Gavotte

Musical score for 'Gavotte' in G major, 2/4 time. The score consists of two staves of music. The first staff starts with a treble clef and a key signature of one flat (F major). The second staff is marked with a '6' above it.

Taille (Viola alto)
Courante

Musical score for Courante, measures 1-9. The piece is in 3/2 time and B-flat major. The notation is for Viola alto. Measures 1-4 show a steady eighth-note pattern. Measure 5 has a melodic flourish. Measures 6-9 continue the eighth-note pattern with a repeat sign at the end.

Sarabande

Musical score for Sarabande, measures 1-9. The piece is in 3/4 time and B-flat major. The notation is for Viola alto. Measures 1-4 show a steady eighth-note pattern. Measure 5 has a melodic flourish. Measures 6-9 continue the eighth-note pattern with a repeat sign at the end.

Bourrée

Musical score for Bourrée, measures 1-11. The piece is in 3/4 time and B-flat major. The notation is for Viola alto. Measures 1-4 show a steady eighth-note pattern. Measure 5 has a melodic flourish. Measures 6-11 continue the eighth-note pattern with a repeat sign at the end.

Menuet

Musical score for Menuet, measures 1-12. The piece is in 3/4 time and B-flat major. The notation is for Viola alto. Measures 1-4 show a steady eighth-note pattern. Measure 5 has a melodic flourish. Measures 6-12 continue the eighth-note pattern with a repeat sign at the end. First and second endings are indicated by boxes labeled 1 and 2.

Suite 6

Ouverture

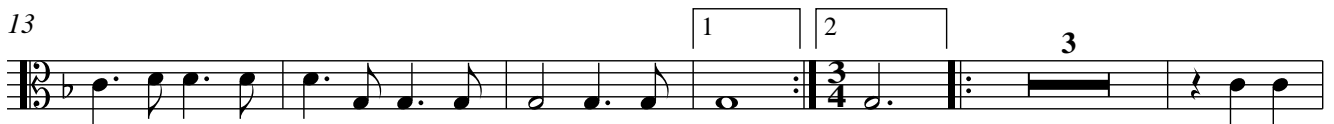
*Johann Kaspar
Ferdinand Fischer*



7



13



21



28



36



44



52



60



Brandle

6

13

19

25

33

1 2 Gay

Amener

8

16

Gavotte

6

Courante

5

9

Sarabande

9

Bourrée

5

11

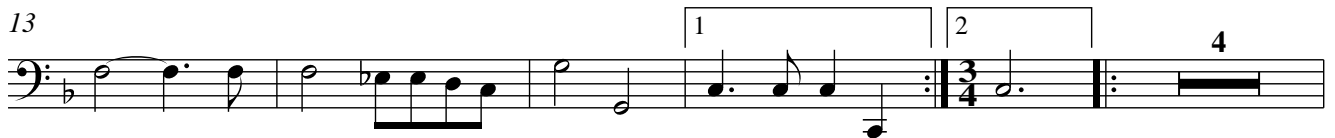
Menuet

9

Suite 6

Ouverture

*Johann Kaspar
Ferdinand Fischer*



Brandle

6

13

19

25

33

1 2 Gay

Amener

8

16

Gavotte

6

Courante

5

9

Sarabande

9

Bourrée

5

11

Menuet

9